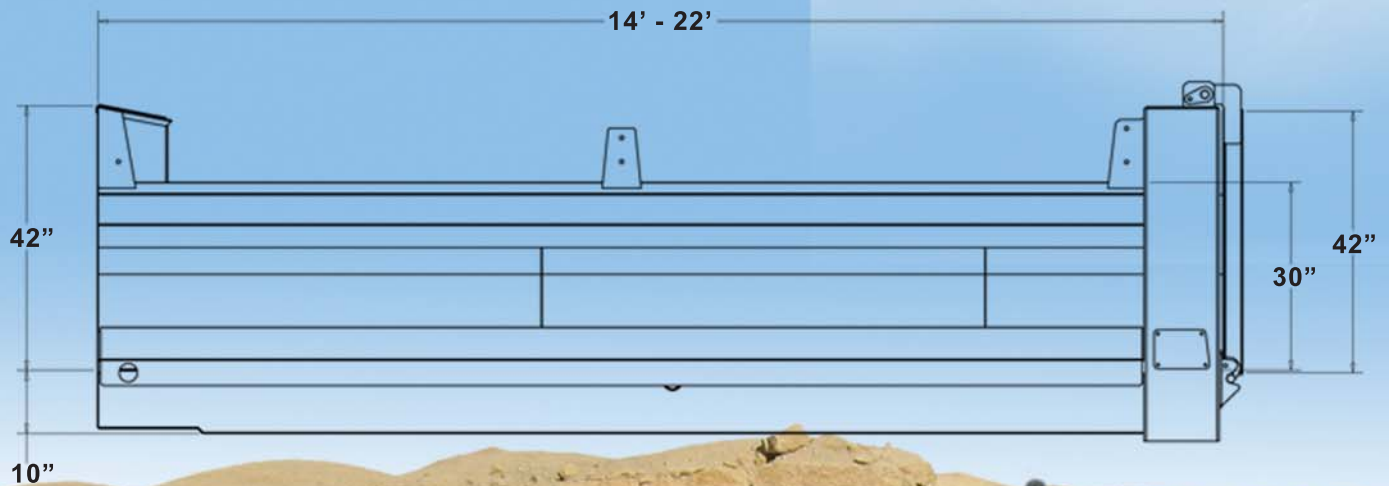




# SK1000 XL1000 GRAVEL BODY



MIDLAND...ALWAYS YOUR BETTER INVESTMENT

# SK1000 XL1000 GRAVEL BODY

BETTER PAYLOAD  
INDUSTRY LEADING DESIGN  
STRUCTURAL INTEGRITY



## STANDARD FEATURES

### FLOOR

- 3/16" AR200 Floor
- No Crossmembers
- 3/16" Hat Longitudinal Sills
- 3/16" Body (SK)

### SIDES

- 30" Standard Height
- 10 Ga. Inside Panel
- 10 Ga. One-Piece Formed Top Rail (SK and XL) and Horizontal Rib (XL)
- Side Board Extension Gussets

### FRONT

- 42" Standard Height
- 10 Ga. High Strength Steel

### TAILGATE

- 42" Standard Height
- 3/16" AR200
- Greasable Top Hinges
- Unique In-Post Latch System

### BUMPER

- Heavy Duty Formed C-Channel

## OPTIONS

- 36" Side Height
- Manual Gate Trip Lever
- 3/16" or 1/4" HX450 Floor
- HX450 Body and Gate (SK)
- Finish Painting
- Body Safety Props
- Plywood Lining
- Full or Half Cab Shield
- Two-Way (Double Acting) Tailgate
- Sloped Tailgate
- Tarping Systems
- 48" Front & Tailgate
- Side Boards
- Top Mount Hoist (48" Front)
- Hydraulic Tailgate

## OTHER FEATURES

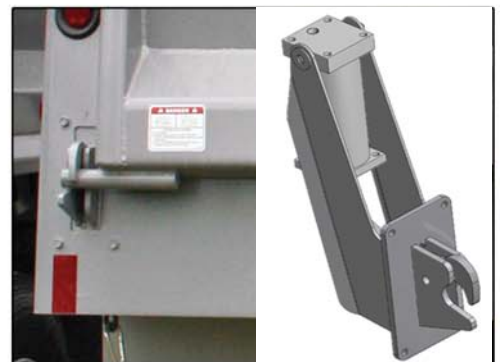
- Heavy Duty Spread Chains
- Self-Cleaning Rub Rail, Tailgate, Ribs & Bumper
- Continuous Seam Welds (in critical areas)
- Anti-Sail Mudflap Brackets
- Rubber Mounted Sealed Marker Lights



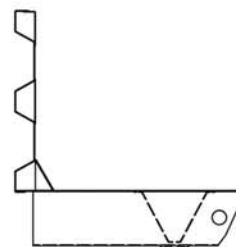
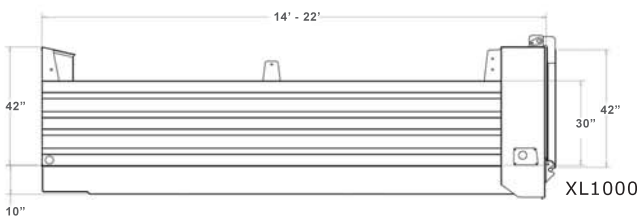
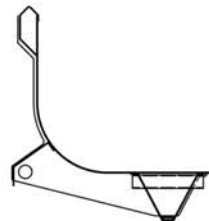
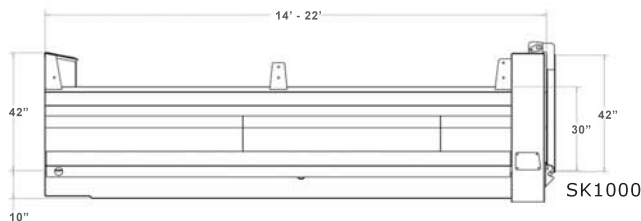
XL Body on Tandem



SK Body on Tri Drive



Dual Action Gate Latch System  
(service free and self adjusting)



We also manufacture  
END DUMPS / BOTTOM DUMPS  
PUP TRAILERS / SIDE DUMPS

The information, illustrations and specifications provided in this brochure are based on our latest product information at time of publication. To ensure continuous product improvements, Midland Manufacturing reserves the right to make changes at any time to products described and/or illustrated herein without notice or liability.

Sold by:



Box 249 - 36 Main Street (PR #205)  
Rosenort, Manitoba CANADA  
R0G 1W0

Phone: 204.746.2348  
Fax: 204.746.2286

[www.midland-trailers.com](http://www.midland-trailers.com)